



GENUINE **MEGA**

MEGA WATER CANNONS



Mega's water cannons are designed and built to perform in the most severe environments of mining and construction. Designed for the water pressures and flows required in the mobile water equipment industry, Mega's water cannons are ideal for fire suppression, high pressure equipment washing, and applications that require long-distance, concentrated spray. We offer water cannons for use with both electric and electro-hydraulic systems, as well as a manually-operated water cannon for use where no power is available.

www.megacorpinc.com





GENUINE MEGA



MEGA WATER CANNONS

TABLE OF CONTENTS

- » Mega Severe Duty Water Cannons 3-4
- » Mega Specialty Water Cannons..... 3-5
- » Main Parts of a Mega Water Cannon..... 3-6
- » Advantages & Benefits of Severe Duty Mega Water Cannon 3-7
- » Hydraulic, Remote, Mega Water Cannon, *Part No. 304952* 3-8
- » Electric, Mega Water Cannon, 12 VDC *Part No. 304653* | 24 VDC *Part No. 304652* 3-9
- » Manual, Mega Water Cannon, *Part No. 304612* 3-10
- » Available accessories for Mega Manual Water Cannon..... 3-11
- » Standard Nozzles for Mega Water Cannon 3-12
- » Specialty Nozzles for Mega Water Cannon..... 3-13
- » Mega Water Cannon Kits..... 3-14
 - » Hydraulic, Mega Water Cannon Kit, *Part No. 045026* 3-15
 - » Electric, Mega Water Cannon Kits, 12 VDC *Part No. 043386* | 24 VDC *Part No. 040929* 3-16
 - » Hydraulic, Mega Water Cannon Retro Kit, *Part No. 039885*..... 3-17
 - » Electric, Multi-Purpose Mega Water Cannon Kit, 12 VDC *Part No. 307200* 3-18
- » FAQ Mega Water Cannons 3-19
- » Mega Foam Eduction System 3-20/3-21
- » External Foam Tanks 60, 120 and 200 Gallon 3-22
- » FAQ Mega Foam Eduction System 3-24/3-25



MEGA WATER CANNONS

Mega water cannons (known as ‘monitors’ in the fire fighting industry) are designed for the severe duty environments of mining and construction. Mega water cannons feature 2.5 inch stainless steel waterways and a unique, permanently lubricated swivel joint design that minimizes maintenance requirements and improves service life. Mega also offers application-specific water cannons, so that no matter what your needs are, we have a water cannon that will work for you.

Mega water cannons are available in electric drive and electro-hydraulic drive models. We also offer a manually-operated water cannon suitable for both stationary and mobile applications. Kit options are available for the hydraulic and electric water cannons.

Mega Severe Duty Water Cannons

Mega Hydraulic Water Cannon



Optional Nozzle shown.

The stainless steel Mega Hydraulic Water Cannon is compatible with electro-hydraulic systems that have a 24 VDC power source available. The Water Cannon is directed by a hydraulic control valve, which receives command signals from the Mega cab control system joystick. The hydraulic water cannon is rated for up to 450 psi hydraulic pressure, 200 psi water pressure, and has a reach of up to 200 ft. at 750 gpm (using the straight bore nozzle and stream shaper).

- Hydraulic drive motor; requires 24 VDC power source
- 1/2 gpm hydraulic motor flow at 500 psi
- Stainless steel waterway
- 320° horizontal rotation range, 155° vertical rotation range (+90° to -65°) and rotational speed of 20°/sec.

Mega Electric Water Cannon



Optional Nozzle shown.

The stainless steel Mega Electric Water Cannon is compatible with any water tank that has either a 12VDC or a 24 VDC power source available. The Water Cannon is directed by a logic box, which receives command signals from either the Mega cab control system joystick or a stand alone joystick box. The electric water cannon is rated for up to 450 psi hydraulic pressure, 200 psi water pressure, and has a reach of up to 200 ft. (using the straight bore nozzle with stream shaper).

- Electric drive motor; requires either a 12 VDC or a 24 VDC power source
- 1/2 gpm hydraulic motor flow at 500 psi
- Stainless steel waterway
- 320° horizontal rotation range, 155° vertical rotation range (+90° to -65°) and rotational speed of 20°/sec.

Mega Specialty Water Cannons

Mega Manual Water Cannon

For environments where no electrical power is available, we offer the Mega Manual Water Cannon. This water cannon uses a simple tiller bar control and manual friction brake, and is designed for fixed installations in non-corrosive environments. Easy to use and capable of up to 1250 gpm, this water cannon is ideal for fire suppression, equipment wash-down, and agricultural applications where no electric power is available.



Optional Nozzle shown.

- Durable, lightweight pyrolite construction
- 3.0 inch (76 mm) waterway
- Cast-in turning vanes in each elbow for more efficient flow and improved stream performance
- 360° horizontal rotation range, 150° vertical rotation range (+90° to -60°)
- Friction lock on horizontal and vertical rotation
- Not severe-duty

Mega Multi-Purpose Water Cannon

This specialty electric water cannon is compatible with any water tank that has a 12 VDC or 24 VDC power source available. The heavy-duty electric motors allows for swift positioning and high accuracy. The Mega Multi-Purpose Water Cannon comes with an adjustable electric fan to stream nozzle, and is best suited for small water tank units with lower flows and pressures.



Optional Nozzle shown.

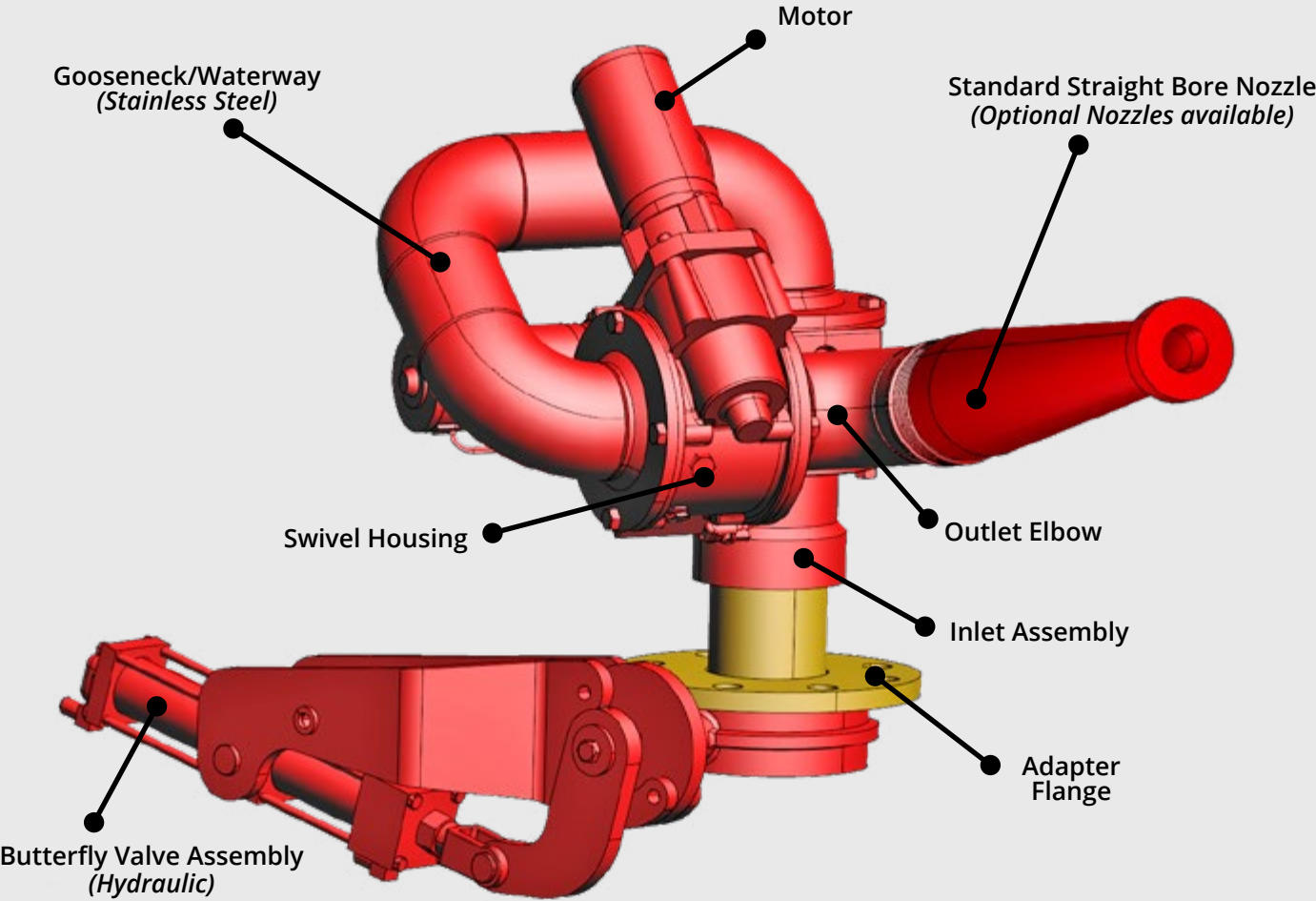
- Durable, lightweight Pyrolite construction; 10.4 kg (23 lbs) without nozzle
- Integrated and sealed electronics
- Waterproof (IP 67 rated) locking connectors
- 320° horizontal rotation range, 135° vertical rotation range (+90° to -45°) and rotational speed of 20°/sec
- Adjustable rotation stops
- Quick disconnect
- Not severe-duty



Advantages and Benefits of Severe Duty Mega Water Cannons

FEATURES	BENEFITS
STAINLESS STEEL WATERWAY	Long life in harsh waters.
LARGE POLYMER BEARINGS	No ball bearings. Improved service life. Easily re-buildable swivel joints.
2.5 INCH DIAMETER WATERWAY	Perfectly matched with Mega high performance pumps for long distance water stream shots.
2.5 INCH NFT NOZZLE ADAPTER	Plug and play application of adjustable nozzles, stream straighteners, and foam eduction equipment.
ELECTRIC OR HYDRAULIC MOTOR DRIVES	Can be adapted to any water tanker application.
COMPLETE CONTROL PACKAGES	Modular design for any retrofit application.

MAIN PARTS OF A WATER CANNON



Advantages and Benefits of Severe Duty Mega Water Cannons

No matter what your application or environment is, Mega has a water cannon that will work for you. All Mega Water Cannons are designed to endure harsh environments and poor water conditions. With the option of electric or hydraulic drive motors, as well as a completely manually operated version, our water cannons can be adapted to any water tank application. A variety of adjustable nozzles, stream shapers, and foam eduction equipment allows for even further customization.



HIGH DENSITY POLYMER BEARINGS

With a much longer service life, these bearings are far superior to ball bearings, and are exclusive in the mining industry. The Mega water cannon high density polymer bearings are specially designed for severe duty mining, and are present only in severe duty water cannons.



HEAVY DUTY GEARS & SHAFTS

Heavy duty worm gears and planetary drives absorb shock to provide longer life in heavy duty environments. Additionally, the swivels and bearings are sealed and do not require regular service.



SPECIALTY NOZZLES

Mega's water cannons can be fitted with a variety of adjustable nozzles to customize the spray pattern and distance. In addition to the standard straight bore nozzle, Mega offers fog to stream, fog to stream with foam eduction, fan to stream (electric water cannon only), and foam eduction nozzles.

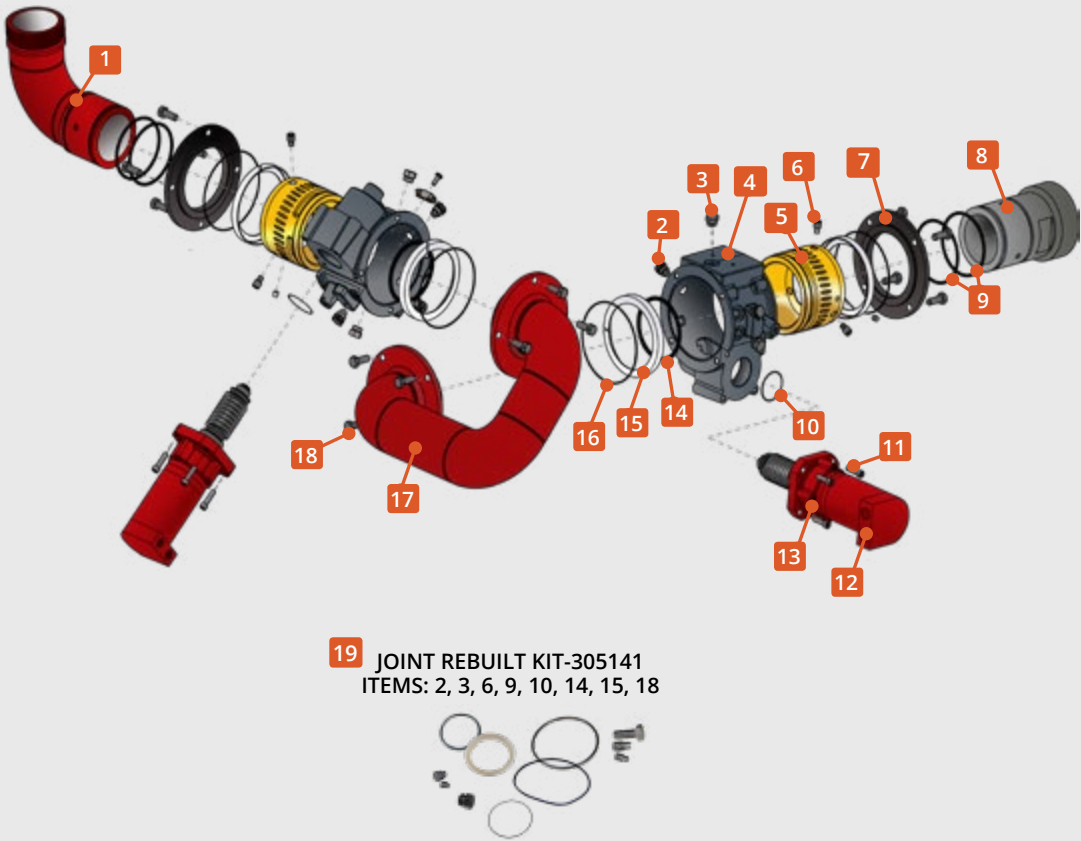


FOAM EDUCTION AVAILABLE

On-call, mobile fire suppression systems are essential for the safety of any mine or construction site. Mega offers a variety of adjustable air aspirating foam eduction nozzles for use with our water cannons. Further details on Mega's full Fire Suppression System can be found later in this section.

Mega Water Cannon, Hydraulic, Remote
Part No. 304952

- Stainless steel • 450 PSI Drive Motors • 2.5 inch waterway • Severe duty construction
- Wear resistant polymer bearings • Heavy duty shafts & gears



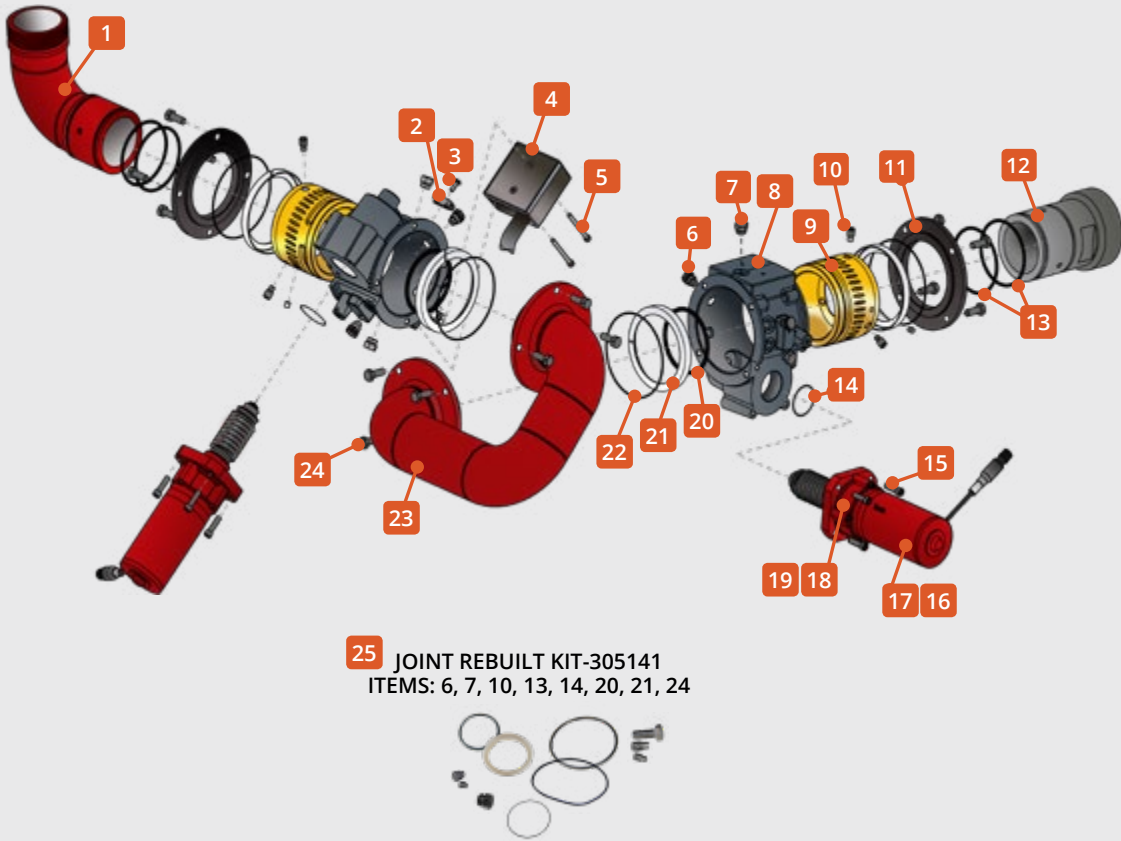
ITEM	PART NO.	DESCRIPTION	QTY
	304952	Hydraulic, Water Cannon	
1	304627	Outlet Elbow	1
2	304632	Rotation Stop*	4
3	304633	Plug*	6
4	304643	Swivel Housing	2
5	304630	Worm Gear	2
6	304642	Stud*	6
7	304631	Joint Cap	2
8	304629	Inlet Assembly	1
9	304639	O-Ring Seal, Outer Joint*	4
10	304897	O-Ring Seal Drive*	2

* Nozzle not included. Please look at our nozzle section to purchase a nozzle.

ITEM	PART NO.	DESCRIPTION	QTY
11	304635	Motor Fastener	8
12	307586	Water Cannon Motor, Hydraulic	2
13	304656	Motor & Gear Assembly, Hydraulic	2
14	304638	O-Ring Seal, Inner Joint*	2
15	304637	Bearing *	4
16	304636	O-Ring Seal, Flange	4
17	304628	Gooseneck Assembly	1
18	304640	Swivel Fastener*	16
19	305141	Joint Rebuilt Kit (Rebuilds 2 Joints)	1

Mega Water Cannon, Electric, Remote
12 VDC Part No. 304653 | 24 VDC Part No. 304652

- 24 VDC motors • 450 PSI Drive Motors • 2.5 inch waterway • Severe duty construction
- Wear resistant polymer bearings • Heavy duty shafts & gears



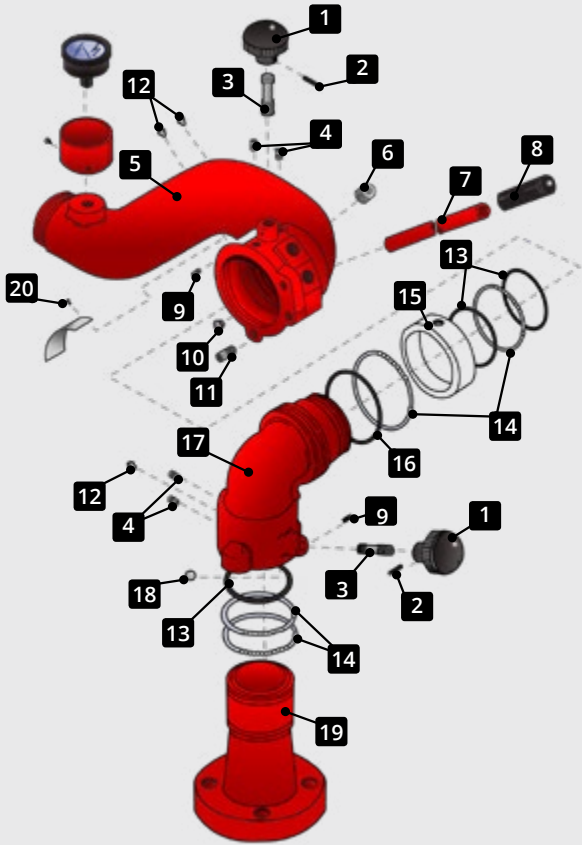
ITEM	PART NO.	DESCRIPTION	QTY
	304653	Electric, 12 VDC Water Cannon	1
	304652	Electric, 24 VDC Water Cannon	1
1	304627	Outlet Elbow	1
2	304651	Speed Clip	1
3	304650	Speed Clip Fastener	1
4	304620	Wiring Harness	1
5	304641	Junction Box Fastener	2
6	304632	Rotation Stop*	4
7	304633	Plug*	6
8	304643	Swivel Housing	2
9	304630	Worm Gear	2
10	304642	Stud*	6
11	304631	Joint Cap	2

* VDC-Volts Direct Current.
* Nozzle not included. Please look at our nozzle section to purchase a nozzle.

ITEM	PART NO.	DESCRIPTION	QTY
12	304629	Inlet Assembly	1
13	304639	O-Ring Seal, Outer Joint*	4
14	304897	O-Ring Seal Drive*	2
15	304635	Motor Fastener	8
16	307585	Water Cannon Motor, Electric 24 VDC	2
17	307584	Water Cannon Motor, Electric 12 VDC	2
18	304618	Motor & Gear Assembly, Electric 24 VDC	2
19	304619	Motor & Gear Assembly, Electric 12 VDC	2
20	304638	O-Ring Seal, Inner Joint*	2
21	304637	Bearing*	4
22	304636	O-Ring Seal, Flange	4
23	304628	Gooseneck Assembly	1
24	304640	Swivel Fastener*	16
25	305141	Joint Rebuilt Kit (Rebuilds 2 Joints)	1

Mega Water Cannon, Manual
Part No. 304612

- Mega Manual Water Cannon is used where no power is available.
- Stainless Steel • Fire Suppression • Worker Friendly; Easy to Use • Equipment wash down
 - Agricultural Applications • 3 inch waterway • Up to 1250 gpm flow



ITEM	PART NO.	DESCRIPTION	QTY
	304612	Manual Water Cannon	
1	304900	Brake Knob	2
2	304901	Gooseneck Assembly	2
3	304902	Brake Shaft	2
4	304903	Plug	4
5	304904	Elbow, Outlet	1
6	304905	Plug	1
7	304906	Handle	1
8	304907	Handle Grip	1
9	304908	Fastener, Swivel	2
10	304909	Plug	1
11	304910	Rotation Stop	1
12	304911	Grease Fitting	4

ITEM	PART NO.	DESCRIPTION	QTY
13	304912	O-Ring Seal, Joint	3
14	304913	Ball Bearing, Joint	4
15	304914	Brake Band	1
16	304915	O-Ring Seal, Joint	1
17	304916	Elbow, Swivel Joint	1
18	304917	Brake Ball	1
19	304918	Inlet Assembly	1
20	304920	Fastener, Swivel	1

* Nozzle not included. Please look at our Mega manual water cannon accessories section for available nozzles.

Available accessories for Mega Manual Water Cannon 304612

A variety of accessories are available for the Mega manual water cannon, allowing the customer to select components that best fit their specific application, be it fire fighting, equipment wash down, or agricultural uses.



Accessories Include:

ITEM	PART NO.	DESCRIPTION	QTY
1	300656	Nozzle, Manual Adjustable Hydraulic, Foam Eduction	1
2	300087	Nozzle, 1 inch Standard Straight Bore with Built-in Stream Shaper	1
3	300091	Nozzle, 1.5 inch Standard Straight Bore with Built-in Stream Shaper	1
4	300822	Grid for Standard Straight Bore Nozzle	1
5	304299	Short Stream Shaper	1
6	000194	3 inch Flange Weld	1
7	350029	Hex, Nut, 5/8 inch	8
8	350006	Washer, Flat, 5/8 inch	16
9	355458	Cap Screw, 5/8 inch X 4 1/4 inch	8
10	300030	Butterfly Handle, 3 inch	1
11	300104	Butterfly Valve, 3 inch	1

Standard Nozzles for Mega Water Cannon

The water cannon system is a versatile tool suitable for many different mining and construction applications. The straight bore nozzles produce a straight stream of water able to reach long distances. The water cannon will obtain maximum reach when the nozzle is at about 32 degrees of elevation with the chassis RPM at high idle.

Standard Nozzles



300087

1 inch Standard Straight Bore With Built-In Stream Shaper

- On-Highway truck applications (low pressure systems)
- Single stream
- Built-in stream shaper straightens water flow & increases distance for lower pressure water pump systems
- 2.5 inch NH connection



300091

1.5 inch Standard Straight Bore With Built-In Stream Shaper

- Single stream
- Built-in stream shaper straightens water flow & increases distance
- 2.5 inch NH connection

Performance Enhancements

When even greater reach is needed (for high-wall, stockpile, or fire fighting operations) Mega recommends stream shapers for use with the straight bore nozzles. These stream shapers straighten the water flow before it exits the nozzle, resulting in a smoother stream that travels further.



300822

Grid For Standard Straight Bore Nozzle

- Single stream
- Built-in stream shaper straightens water flow & increases distance
- 2.5 inch NH connection



304299

Short Stream Shaper

- Increases performance of straight bore nozzles
- Shapes water stream to produce efficient flow
- In-line Short increases reach

Specialty Nozzles for Mega Water Cannon

Mega offers a variety of specialty, adjustable nozzles for use with both hydraulic and electric water cannons. These nozzles allow the customer to adjust a water cannon's spray pattern and reach to meet their specific application requirements. Contact our Parts Sales or Product Support Department for assistance in selecting the right nozzle for your water cannon.

Hydraulically Adjustable Nozzles For Hydraulic Drive Mega Water Cannon

306755



Fan To Stream

- 140 feet reach
- Adjustable fan pattern
- Useful for wash down operations

305875



Fog To Stream

- Hydraulic Adjustment
- Variable Fog Pattern
- 150 feet stream reach

305876



Fog To Stream With Foam Eduction

- Hydraulic Adjustment
- Variable Fog Pattern
- 150 feet stream reach
- Adjustable fog pattern with foam (1, 3 and 6% proportioning)
- System does not include foam agent
- Requires foam agent system

Electrically Adjustable Nozzles For Mega Electric Drive Water Cannon

305151



Fan To Stream

- 140 feet reach
- Adjustable fan pattern
- Useful for wash down operations

305150



Fog To Stream

- 165 feet reach
- Adjustable fog pattern

305149



Foam Eduction

- 150 feet reach
- Adjustable fog pattern with foam (1, 3 and 6% proportioning)
- System does not include foam agent
- Requires foam agent system

Manual Adjustable Nozzle For Mega Hydraulic and Electric Drive Water Cannon

300656



Foam Eduction

- Manually adjustable fog pattern
- Foam eduction (1, 3 and 6% proportioning)
- 150 feet stream reach
- Adjustable fog pattern with foam (1, 3 and 6% proportioning)
- System does not include foam agent
- Requires foam agent system
- Requires foam agent system

MEGA WATER CANNON KITS



THE IDEAL SOLUTION.

When you need to add, replace, or upgrade a water cannon system, Mega's water cannon kits are the ideal solution. Our kits are available for both hydraulic and pneumatic systems and can be adapted for either a partial or complete installation on any prime mover or tank.

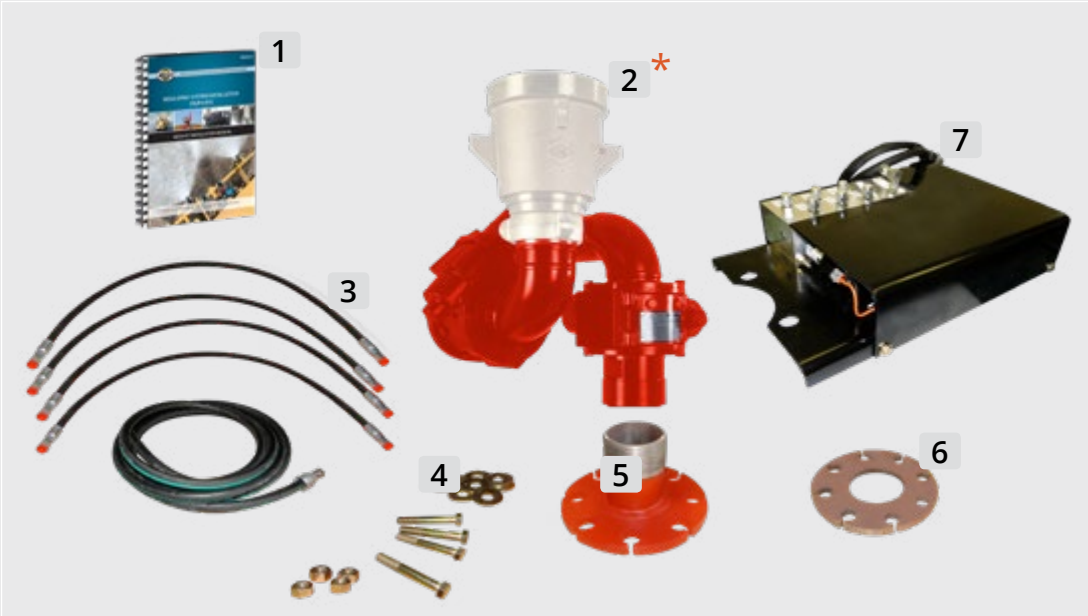
All of our kits come with complete installation instructions and our legendary product and customer support that Mega is known for. Please call Mega part sales at 505.345.2661 for any questions.



Mega Hydraulic Water Cannon Kit Part No. 045026

The Mega Hydraulic Water Cannon kit comes with a detailed installation instruction manual complete with drawings, support parts list, and an illustrated parts breakdown. The base kit includes a Mega Hydraulic Water Cannon, hydraulic control valve, all required electrical cabling, hydraulic hosing, and mounting flanges.

See below for optional components that can be added to customize the kit order for customer specifications. Please call Mega part sales at 505.345.2661 for any questions or inquiries.



Kit Includes:

ITEM	DESCRIPTION
045026	Mega Hydraulic Water Cannon Kit
1	Hydraulic Water Cannon Installation Instructions
2	Mega Hydraulic Water Cannon*
3	All Hydraulic Hosing
4	Mounting Hardware
5	3 inch Flange Adapter
6	3 inch Weld-on Flange
7	Solenoid Assembly

* Nozzle not included. Please look at our nozzle section to purchase a nozzle.

The base kit does not include a butterfly valve or joystick control box, however these parts may be ordered separately to complete the installation for customer specifications. If necessary please order either or both of the two parts below along with the base hydraulic water cannon kit part no.045026.



011454 Hydraulic Butterfly Valve Assembly



052080 Hydraulic Joystick Control Box

Mega Electric Water Cannon Kits
12 VDC Part No. 043386 | 24 VDC Part No. 040929

Mega electric water cannons are available in either 12 or 24 volt (VDC) models. Mega Water Cannons are designed for severe duty applications and feature stainless steel waterways and heavy duty polymer bearings.

See below for optional components that can be added to customize the kit order for customer specifications. Please call Mega part sales at 505.345.2661 for any questions or inquiries.




Kit Includes:

ITEM	DESCRIPTION
043386	12 VDC Mega Electric Water Cannon Kit
040929	24 VDC Mega Electric Water Cannon Kit
1	Electric Water Cannon Installation Instructions
2	Mega Electric Water Cannon*
3	All Electrical Cabling
4	Mounting Hardware
5	3 inch Flange Adapter
6	3 inch Weld-on Flange
7	Logic Control

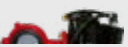
* Nozzle not included. Please look at our nozzle section to purchase a nozzle.

The base kit does not include a butterfly valve or joystick control box, however these parts may be ordered separately to complete the installation for customer specifications. If necessary please order either or both of the two parts below along with either the base 12 VDC part no. 043386 or the 24 VDC part no. 040929 Mega Electric Water Cannon kit. Depending on voltage please order the pneumatic butterfly valve specific to either the 12 VDC or 24 VDC system.




029860

Pneumatic Butterfly Valve Assembly
FOR 12 VDC
ELECTRIC WATER CANNON



040556

Pneumatic Butterfly Valve Assembly
FOR 24 VDC
ELECTRIC WATER CANNON

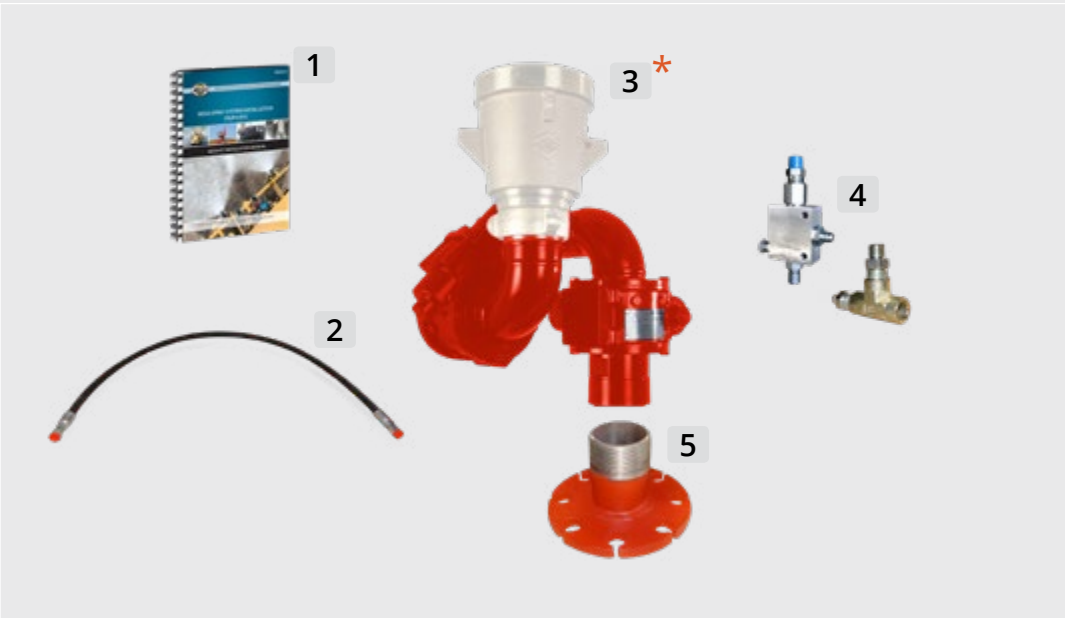


052083

Electric Joystick Control Box

Mega Hydraulic Water Cannon Retro Kit
Part No. 039885

The hydraulic water cannon retro kit is designed to replace an older model hydraulic water cannon with the current system using the current joystick and butterfly valve. For a complete hydraulic water cannon kit please reference part no. 045026. Please call Mega part sales at 505.345.2661 for any questions.



Kit Includes:

ITEM	DESCRIPTION
039885	Mega Hydraulic Water Cannon Retro Kit
1	Hydraulic Water Cannon Installation Instructions
2	All Hydraulic Hosing
3	Mega Hydraulic Water Cannon*
4	All Hydraulic Parts Required
5	3 inch Flange Adapter

* Nozzle not included. Please look at our nozzle section to purchase a nozzle.

Mega Multi-Purpose Water Cannon Kit Part No. 307200

We now offer a Mega Multi-Purpose Water Cannon kit for customers who need an affordable, reliable electric water cannon for non-heavy duty applications. Help fight fires with a Mega Multi-Purpose Water Cannon.



Kit Includes:

ITEM	DESCRIPTION
307200	Mega Multi-Purpose Water Cannon Kit
1	Forestry Electric Water Cannon
2	*Electric Adjustable Nozzle
3	Electric Ball Valve, 2 inch
4	Cabling
5	Quick Disconnect, 2 inch
6	Joystick Control

* Nozzle included with kit.

Mega Water Cannon FAQ Section

What is included in the hydraulic water cannon kit?

Yes. Mega offers the following kits:

- Hydraulic Water Cannon Kit (P/N 045026)
- Hydraulic Water Cannon Retrofit Kit (P/N 039885)
- Electric Water Cannon Kit 12 VDC (P/N 043386)
- Electric Water Cannon Kit 24 VDC (P/N 040929)

Some water cannon components are not included with the base kits. Please contact our Mega Parts Sales Team at 505.345.2661 for additional information.

What nozzles should I choose to complete my water cannon kit?

Mega offers a variety of high-quality nozzles for use with our water cannons. For details, please refer to our nozzle section or contact our Mega Parts Sales Team for assistance.

I need a nozzle to complete my water cannon kit. What nozzle should I choose?

Mega offers a variety of high-quality nozzles for use with our water cannons. For details, please refer to our nozzle section. Contact Parts Sales at 1.800.345.8889 for assistance in determining which nozzle is best for your specific system.

PROTECT YOUR INVESTMENT



STOP FIRES WITH A MEGA
FOAM TANK

Mega Foam Education System

Fire Suppression

For decades, foam concentrates have been used extensively to combat surface fires in the mining, construction, and forestry industries. Foam concentrates change how water reacts with fuels, drastically increasing the water’s effectiveness in suppressing and containing fires. The use of foam reduces water consumption, suppresses fires more quickly, and more effectively prevents the fire from spreading to nearby combustible materials. No matter how large or small the operation, the safety of everyone on site depends on adequate preparation for an outbreak of fire in any class of fuel.

Tire and Equipment Fires

Tire and equipment fires are a dangerous and costly hazard in the mining and construction industries. Tire fires in particular are extremely difficult to extinguish, as the fire can smolder deep within the rubber where water cannot reach. The presence of an on-call, mobile fire suppression system is essential for the safety of any mine or construction site, to rapidly contain, mop up, and minimize the damage these fires cause. Mega’s Fire Suppression System is designed to be installed on water trucks, creating a multi-purpose mobile fire response unit without needing to re-purpose or purchase a dedicated fire suppression vehicle.



Hydrocarbon Fuel

Lighter than water and highly flammable, hydrocarbons present an extreme fire hazard. Hydrocarbon fires are capable of reaching temperatures in excess of 1000°C (1832°F) in as little as 10 minutes if left unchecked. Mine and construction sites must be prepared to respond immediately in order to contain a hydrocarbon fuel fire and minimize its destructive potential.

Forest Fires

Mega’s Forestry Monitor (Water Cannon) was designed specifically for brush and wildfire fire fighting. A high speed electric drive motor allows for swift positioning and high accuracy. The forestry monitor comes with a mid-flow adjustable fog nozzle that can be adapted for use with a foam education system. Additionally, Mega’s vertical side spray heads (VSS*) discharge vertical fans of water that are ideal for reinforcing black lines.

*Vertical Spray Heads

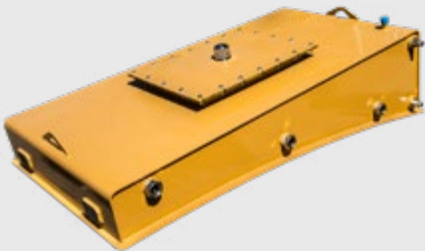


Mega Foam Eduction System

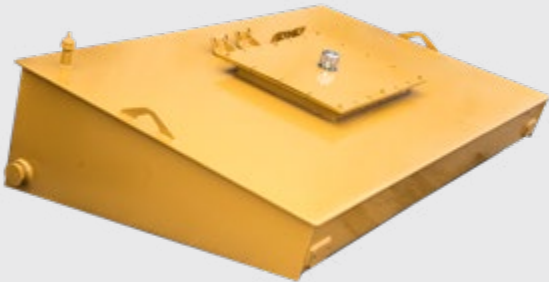
The Mega Fire Suppression System is an air-aspirated foam eduction system compatible with any class of foam that can be nozzle-aspirated.* The system consists of a stainless steel (304 grade) foam concentrate tank, water cannon, and foam eduction nozzle. Our medium-expansion nozzles allow for adjustable foam percentages of 1%, 3%, 6%, and 10%, and possible flow rates of 350, 500, and 750 GPM.

The Mega foam tank is mounted externally on the water tank, and is available in 60, 120 gallon and 200 gallon sizes. Mega’s foam system can be ordered as an optional addition on a new Mega water tank, or purchased as a kit and installed on an existing water tank.

**Always follow the foam concentrate manufacturer’s recommendations for proper storage of the foam concentrate.*



Foam tank-120 gallons external



Foam tank-200 gallons external



The table below shows consumption rates and duration of foam suppression concentrate and water based upon a standard flow rate 1893 lpm/500 gpm and 3% foam proportioning.

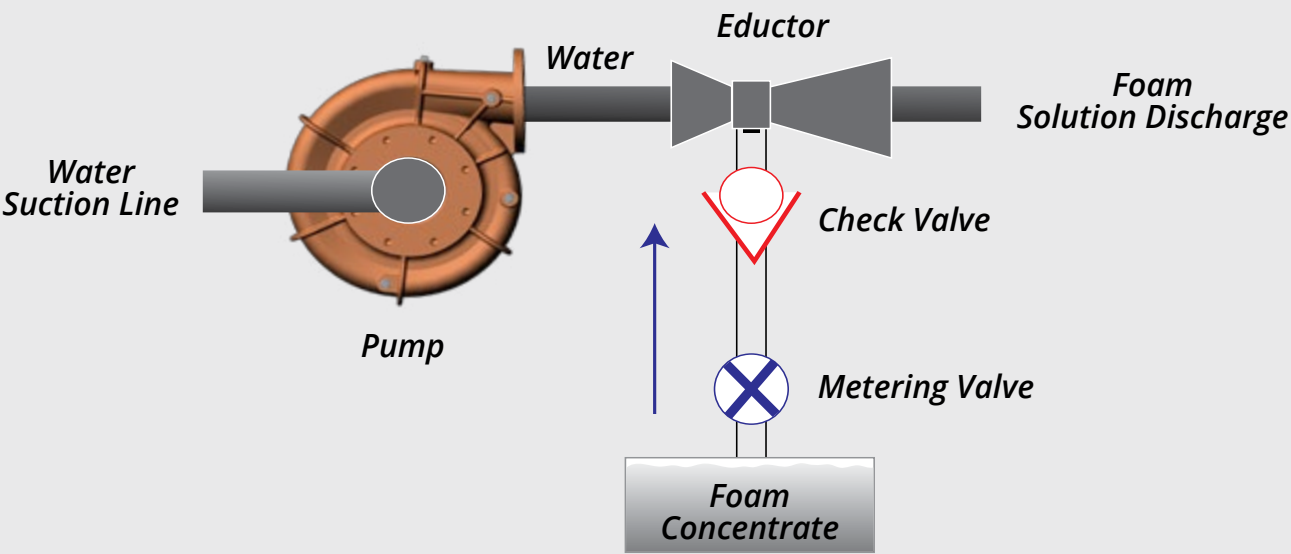
Foam Concentrate liters/gallons	Water liters/gallons	Duration
57/15	1893/500	1 minute
114/30	3786/1000	2 minutes
228/60	7571/2000	4 minutes
341/90	11,357/3000	6 minutes
455/120	15,142/4000	8 minutes

SUPPRESSION

Mega Foam Eduction System FAQ Section

Does Mega offer a foam fire suppression system?

Mega’s foam fire suppression system is a foam eduction system. Pressurized water flows through a narrowed section waterway in the eductor (an air-aspirated nozzle) on the Mega water cannon. This creates an area of negative pressure that draws foam concentrate from a foam concentrate tank into the nozzle throat. The concentrate is mixed with water to create foam. Mega foam fire suppression systems can be used to address Class A and B fires



What are Class A fuels?

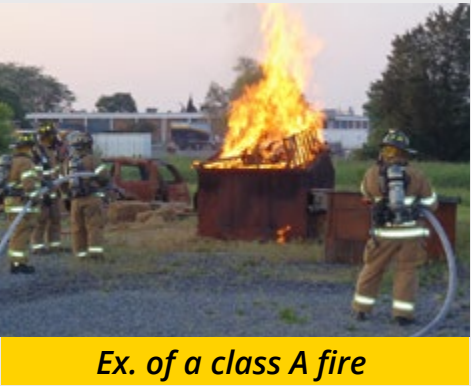
Solid, combustible materials that are not metals are considered to be Class A fuels. Examples of Class A fuels are paper, wood, cloth, rubber, plastics and trash.

What is Class A foam?

Class A foam is created by mixing Class A foam concentrate with water, creating a solution of bubbles that is effective at suppressing Class A fuel fires. This solution has a lower density than water and contains ‘wetting agents’ that reduce the surface tension of the water and increase its heat absorption potential. This allows the solution to penetrate and soak the burning fuel more quickly and efficiently than plain water. Class A foam is commonly said to “make water wetter”.

What are Class B fuels?

Combustible non-metal liquids are considered to be Class B fuels. Examples of Class B fuels are gasoline, oil, diesel fuel and grease.



What is Class B foam?

Class B foam is created by mixing Class B foam concentrate with water to create a foam solution effective at suppressing Class B fuel fires. Instead of soaking into the burning fuel (Class B fuels are liquids), Class B foam forms a film or blanket on top of the fuel. This suffocates the fire by depriving it of oxygen. Class B foam should not be used for pressurized gas or three-dimensional Class B fires.

Pressurized gases are often stored as liquids, but become vapors at room temperature and atmospheric pressure. Class B foam solutions are designed to blanket flammable fuel and smother the fire, but the vapor pressure of pressurized gases is much too high for this to be possible.

Three-dimensional fires are Class B fires in which fuel is discharged from an elevated or pressurized source, creating a pool of combustible fuel on a lower surface. Because of the geometry of these fires, foam solutions cannot blanket the fuel to smother the fire.



Can Class A foam be used to suppress Class B fuel fires, and vice versa?

No. Class A and Class B foams interact very differently with fuel, and they are most effective when used against their respective classes of fuel fires. Class A foam attracts carbon and reduces the surface tension of water, allowing it to penetrate fuels more easily. This is more effective on solid fuels than on liquid fuels. Class B foam repels carbon and forms a film on top of the fuel instead of soaking in, making it very effective at smothering liquid fuels. It is highly recommended for mining and construction sites to have both Class A and Class B foam on hand.

Can Mega foam suppression systems be used to combat Class C and D fires?

No. Class C fires are electrical fires. Water is an excellent conductor of electricity, therefore it is extremely dangerous to use water or water-based foam to combat Class C fires . Class D fires involve combustible metals such as magnesium, sodium, and potassium. These metals are highly reactive with water and water-based foam should not be used to suppress Class D fires.

How do I store foam concentrate?

Always refer to the foam concentrate manufacturer’s specifications and recommendations for storage. Mega’s foam concentrate tank is made with 300 series grade stainless steel

Additional resources:

- Class A and B: What You Need to Know About Foam. Fire Apparatus and Emergency Equipment. <http://www.fireapparatusmagazine.com/articles/print/volume-15/issue-4/features/class-a-and-b-what-you-need-to-know-about-foam.html>
- Fire Fighting Foam Principles and Ethanol-blended Fuel. North Carolina Department of Insurance. http://www.ncdoi.com/osfm/rpd/pt/documents/coursework/ethanol/module5_participantmanuals.pdf
- Interactions of Fire-fighting Foam with Hydrocarbon Fuel. 5th Reebok Foam Seminar, Bolton, UK. <http://www.dynaxcorp.com/resources/pdf/ChangJho-Reebok2013Presentation-final2.pdf>
- Foam vs Fire - Class A Foam for Wildland Fires. A publication of the National Wildfire Coordinating Group. http://www.fs.fed.us/eng/pubs/pdf/hi_res/93511208hi.pdf
- Wildland Fire Suppression Tactics Reference Guide. A publication of the National Wildfire Coordinating Group. <http://www.coloradofirecamp.com/suppression-tactics/suppression-tacticsguide.pdf>

Thank You

For Your Business

#MEGACORPWW

GENUINE MEGA

09-2019 Mega Water Cannons
700 Osuna Rd. N.E. • Albuquerque, NM 87113
1.800.345.8889 • 505.345.2661 • Fax 505-345-6190
www.megacorpinc.com

© Mega Corp. Inc. All Rights Reserved

www.megacorpinc.com

Follow us on social media. #MegaCorpWW

